
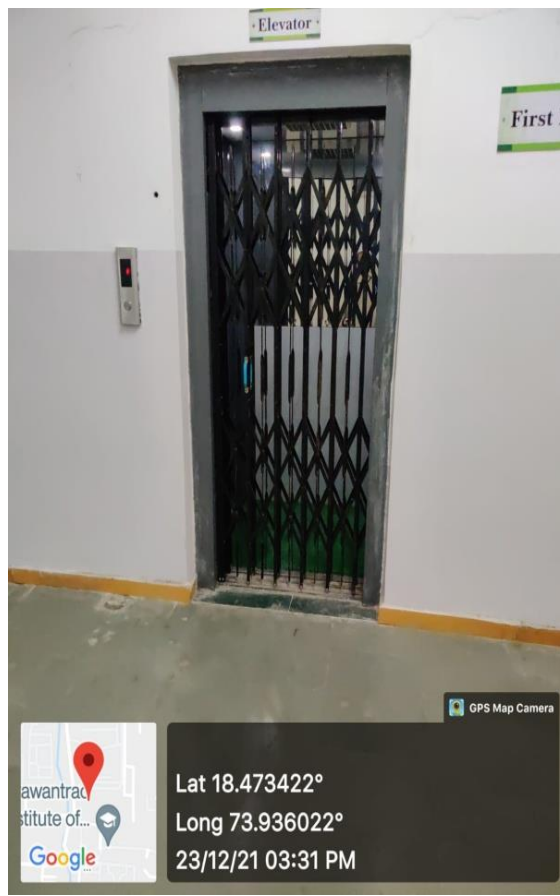
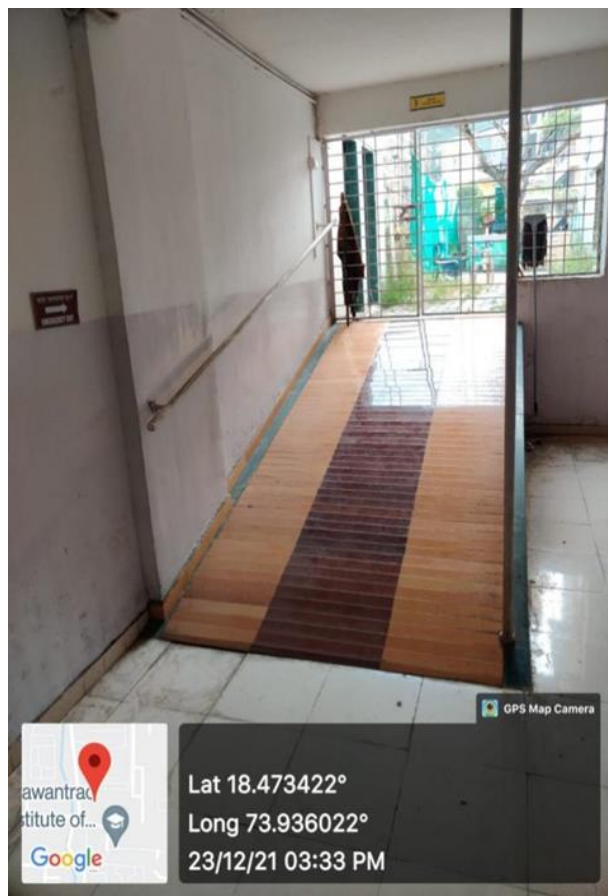
 <p>Prof. Dr T. J. Sawant B.E.(Elec.), MISTE Founder-Secretary</p>	<p align="center">Jayawant Shikshan Prasarak Mandal's JAYAWANTRAO SAWANT COLLEGE OF PHARMACY & RESEARCH</p> <p align="center">S. No. 58, Handewadi Road, Hadapsar, Pune 411 028. Ph: +91- 75955920, Tele Fax: +91- 020-26970907 E- mail: jspm_jscopr@rediffmail.com Website : www.jspm.edu.in (Approved by AICTE, PCI, New Delhi and Govt. of Maharashtra Affiliated to Savitribai Phule Pune University, Pune Accredited by National Assessment and Accreditation Council, Bengaluru</p>	 <p align="center">Dr V.V. Potnis M Pharm., Ph.D, Principal</p>
---	--	--

7.1.7 Disabled-friendly, barrier-free environment in the campus

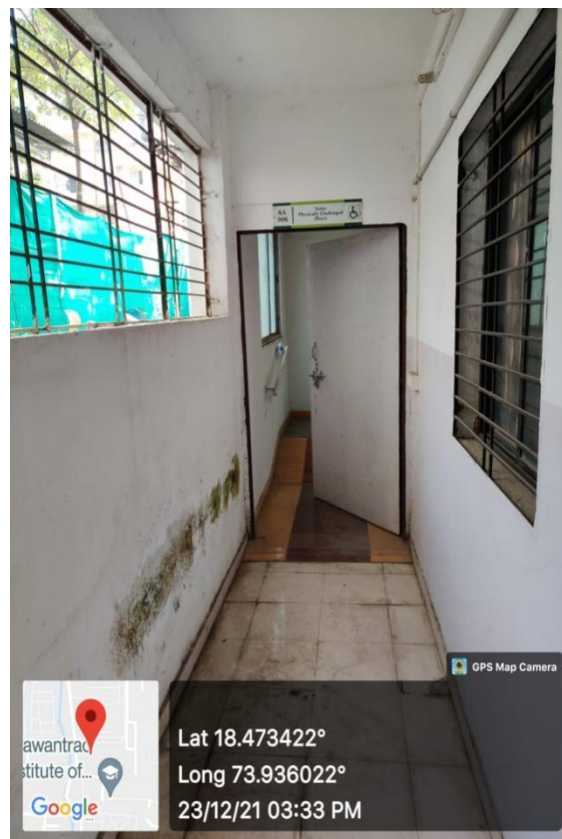
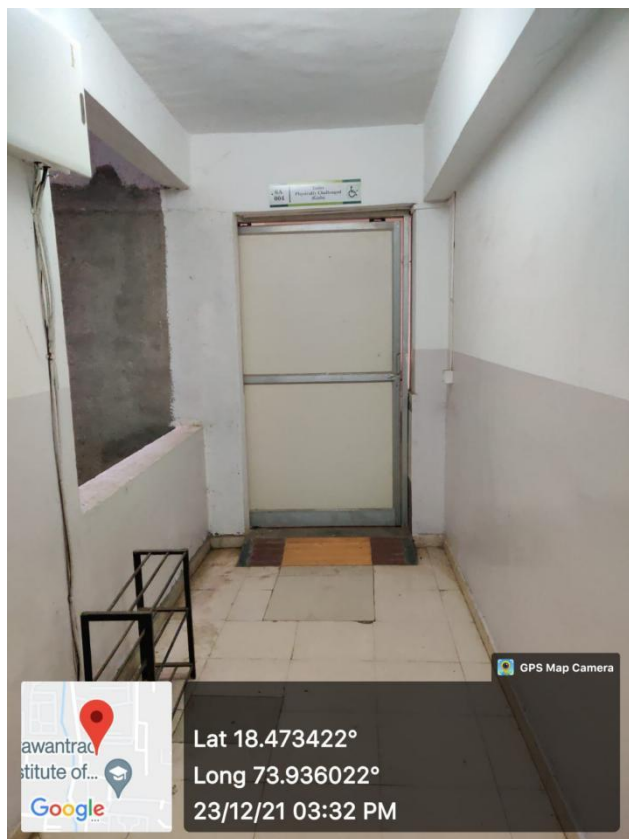


Environment with ramps/lifts for easy access to classrooms



Vasolain
Principal
Jayawantrao Sawant
College of Pharmacy & Research
Hadapsar, Pune - 411 028.

7.1.7 Disabled-friendly, barrier-free environment in the campus



Disabled-friendly washrooms



Vapalair
Principal
Jayawantrao Sawant
College of Pharmacy & Research
Hadapsar, Pune - 411 028.

7.1.7 Disabled-friendly, barrier-free environment in the campus



Signage and signposts

